

SHINJUKU TOHO BLDG. OPEN!!

Topic of Godzilla head



8F Hotel Outdoor Terrace

8-30F  HOTEL GRACERY SHINJUKU

3-6F  TOHO CINEMAS SHINJUKU

2F  maruhan-shinjukutoho

1F Shop & Restaurant

<http://www.toho.co.jp/shinjukutoho/>

Like! KABUKICHO - Guide Book

Published by Kabukicho's concierge committee & Shopping District Promotion Association

ENGLISH

Like! KABUKICHO

Guide Book

Get to know Kabukicho, Japan's most interesting city!

BOOK
IN
BOOK
Venue Map
Included

SPECIAL ISSUE

Take a stroll and view Kabukicho's four seasons

TOPIC

Kabukicho J-Rock!

A live house guide

- ◆ A perfect guide to Shinjuku Toho Building and Shinjuku's best hotels
- ◆ An extensive map of Golden Gai
- ◆ Locations of the best fortune-tellers

COLUMN

- Yu Hirano of "Loft"** The sacred ground of music, Shinjuku Kabukicho
- SUZUBAR's Owner** Welcoming newcomers to Golden Gai
- Kabukicho Column** A city made by its people



<http://www.kabukicho.or.jp/>

<https://www.facebook.com/kabukicho.jp>

HOTEL GRACERY SHINJUKU

Opening April 24th, 2015



970 Rooms,
Bathroom with separate toilet
All rooms provide 'air-e'



Restaurant
using the freshness of the ingredients
is called Bonsalute KABUKI

Bonsalute KABUKI



Hotel Gracery Shinjuku will open and become a new landmark of Shinjuku, Tokyo.
We support business, leisure and sightseeing. We also provide 'convenience' and 'comfort'.



Concierge Desk

Concierge Desk at Hotel Gracery Shinjuku support guest's hotel life with a great deal of language such as English, Chinese, Korean and Thai. Our hotel is located at center of Kabukicho, so we support not only daytime of Kabukicho, but also nighttime of Kabukicho. Please feel free to ask anything.

1-19-1 Kabukicho, Shinjuku-ku - Tokyo, Japan
Phone +81-(0)3-6833-2489

HOTEL GRACERY SHINJUKU

<http://shinjuku.gracery.com/>

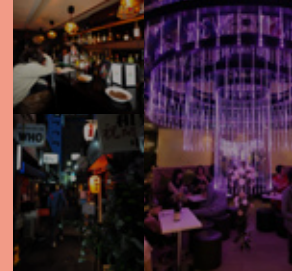


Like! KABUKICHO

Guide Book

CONTENTS

Get to know Kabukicho,
Japan's most interesting city!



SPECIAL ISSUE

04 Take a stroll and view Kabukicho's four seasons

Chapter 1 A Guide to the Toho Building,
and Shinjuku's Best Hotels

08 The New Kabukicho! Casual & Stylish

10 Staying in Kabukicho! From Affordable to Luxurious

BOOK in BOOK GOURMET GUIDE

17 Japanese Food / Teppanyaki / Chinese Food / Noodles

26 Map of Kabukicho

24 Restaurants / Ethnic Foods

Chapter 2 Song, Dance, and Exploration
Kabukicho's Nightlife

30 Kabukicho J-Rock! A Live House Guide

32 Entertainment Cafes / Karaoke

34 Kabukicho by Night Clubs, Lounges, and Bars

Chapter 3 Kabukicho's High-class
Entertainment

36 Nightclubs & Hostess Bars (キャバクラ)

37 Host Clubs

Chapter 4 Golden Gai

39 Welcome to Golden Gai

41 An Extensive Map of Golden Gai

42 Divination Corner
Astrology and Drinks, the Best Fortune-Tellers

Chapter 5 CULTURE

43 Column A City Made by its People

44 A History of Kabukicho

45 Greenbird Kabukicho
Volunteer Community, Meet New People!

46 Editor's Notes

Edited by Kabukicho's Concierge Committee

KIRIN

一番搾り



Kirin's
prime brew
Brewed for
good times

うれしい
一番搾り製法!



ストップ! 未成年者飲酒・飲酒運転。
お酒は楽しく適量で。妊娠中・授乳期の飲酒はやめましょう。 キリンビール株式会社

SPECIAL ISSUE
The sacred place of Shinjuku
Hanazono shrine



☎ 03-3209-5265
☎ 5-17-3 Shinjuku
MAP E-5

The birth of Naitoh Shinjuku

Shinjuku used to be called "Naitoh Shinjuku" or "Oiwake Shinjuku", which means "the new accommodation area built in front of the property of Naitoh mansion".

The time when Naitoh bestowed Shinjuku, the area was quiet, and despite being right on the main street, had no hotels. At the time, the area with hotels was Takaido, about 10 miles away from Shinjuku.

This was inconvenient for people, so Kihei Takamatsu (headman of Abekawa town, Asakusa) applied to establish hotels on Naitoh family's property in exchange for government payments in 1698. That is why it used to be called "Naitoh Shinjuku".

Hanazono shrine, the land of blooming culture.

Back in the day Hanazono shrine was supposed to be a big village shrine, and many people would visit for the sake of their religious faith. When it needed a restoration due to the big fires in 1780 and 1811, they added a stage for plays and dance shows. This was the beginning of the performing arts culture of Hanazono shrine.

After World War II, the town where Koshu Kaido and Oume Kaido cross became a place of energetic spirits. In Japan, the origin of the entertainment business is said to have come from the shrines. Hanazono shrine is not an exception.



The goddess of music, dancing, and thriving business.

Kabukicho Benzaiten

The fortune of Benzaiten, and the origin of Kabuki Benzaiten.

The god of music, dancing, and thriving business.

The fortune of Benzaiten, and the origin of Kabuki Benzaiten.

Kabukicho used to be swampland where lots of gods were enshrined. In April of 1945, the shrine with all of its amulets was burnt down. One devoted believer evacuated Benzaiten from the tragedy. Kihei Suzuki, leader of restoration association, had built a temporary shrine for Benzaiten before they restored the town itself in 1946. This is where the shrine still stands. On the monument in the shrine, the following is inscribed "In honour of our everlasting respect for Benzaiten as a neighbourhood guardian".

Take a *stroll* and *view*
Kabukicho's *four seasons*

Spring
April



Cherry blossoms of Hanazono shrine



Cherry blossoms in Shinjuku Gyoen

Hanazono Shrine's Annual Festivals [May]

The highlight festival would be the Shinko festival, which features two portable shrines. The Shinko festival is held on the Saturday, Sunday, and Monday closest to May 28th.

Present day Kabukicho 1-chome used to be a area called Tsunohazu, where Kumano shrine now rests. 2-chome used to be the Nishi Okubo area, where Kio shrine now rests. The Golden Gai area used to be Sanko town, where Hanazono shrine now rests. Each shrine has its own original festival, making for big Kabukicho attractions.



July

May



Shinjuku Eisa Festival
Shinjuku's Hottest Day [July]

The annual mid-summer traditional festival. Eisa represents the tradition of Okinawa. At the festival, participants shout with passion. Held on the last Saturday of July.

Summer

Shinjuku Junisha - Kumano Shrine's Annual Festival [September]



The district previously known as Tsunohazu spans from Shinjuku Station's west to east exits (and even as far as Kabukicho).

Shinjuku Junisha: Kumano Shrine is in this area. The Kumano Shrine's very difficult, and traditional way of carrying their portable shrine is called "Chidori Katsugi", which has an important culture heritage. Both "Chidori Katsugi" and "Yotsuya Katsugi" (of Suga Shrine, Shinjuku Suga) are very unique styles.

The word "chidori" means a drunkard's walk. "Chidori Katsugi" however, is a bit different, in that they walk with sliding feet.

Yan festival, once every 3 years.
Yin festival, twice every 3 years.

Junisha Kumano shrine's annual festival has a 3-year-cycle. In the Yan festival, 2 big portable shrines (1.5t each) parade around Shinjuku station. In the Yin festival, each area's portable shrine parade around Shinjuku and other towns, the shrine associations unite, and a handful of portable shrines parade around Shinjuku station. The parade's dynamic views are a pleasure to see.



Kio Shrine's Annual Festival [September]



Kabukicho's 2-chome; where Kio shrine is built, is the territory of shrine carers. Kio Shrine is the only shrine where demons are said to grace your skin disease, and many other ailments. The god Ebisu; enshrined in Mishima Shrine, is one of the 7 Shinjuku Yamanote gods. Its annual festival is held every September. A portable shrine with two sculpted demon faces liven up the festival.

Shinjuku Golden Gai Thanksgiving Festival

[Last Sunday of August]

Held on the last Sunday of August, no entry fee is required and all drinks are only ¥500. Golden Gai is normally a place to enjoy conversation with the other customers, but being packed with so many people around festival time, you can just try and find a bar that you want to visit again when things quiet down.



August



Shinjuku Junisha
Kumano Shrine



☎ 03-3343-5521

☎ 2-11-2 Nishi-Shinjuku

In the centre of Tokyo,
a culturally traditional
shrine surrounded
by trees

The origin of the Junisha Kumano Shrine is as follows: A wealthy Nakano district citizen, Kuro Suzuki, moved Junisho Gongen (gods) from Kumano Sanzan (his birthplace) to Tokyo from 1394-1428.

Kuro deified a god of Kumano while he was working on the cultivation of this area.

After the Suzuki family became wealthy, Kuro brought all the Junisha Gongen from Kumano Sanzan in 1403. In the Edo era, Shinjuku Junisha Kumano Shrine became a famous place for its beautiful scenery, including a waterfall and a pond. Artists of the day would often spend time in the area.



Inari Kio Shrine

☎ 03-3200-2904 MAP E-1

☎ 2-17-5 Kabukicho



Standing in Kabukicho 2-chome, Kio Shrine, the only shrine at which the demon occasionally becomes benevolent, was constructed to enshrine both the Inari god of Okubo village, and Kiou Gongen. Inside the shrine, there are wooden zodiac animal statues, which are said to give you luck if touched.

The god Ebisu, one of the 7 Shinjuku Yamanote gods is enshrined in Mishima Shrine, which lies inside Inari Kio Shrine.

Autumn



Shinjuku's Hanazono Shrine Otori Festival [November]

There are around 60 booths selling "Kazarikumade" (lit. decorative rakes, (飾り熊手)) around the eaves of the shrine, and around 200 food-and-drink stalls. Every year, the Meiji-period-started "Bird Day Fair"; with 600,000 people visiting, honours the anniversary of Prince Yamato Takeru's death. The bustle of the "kumade" business lasting until December, is an important part of the festival's culture.

November



Real Illumination, Yakusho Street, Shinjuku Ward [November-February]

Kuyakusho Street's "Real Illumination" has over 90 maple and ginkgo trees at its roadside, and over 100,000 LEDs brightly lighting up the street. The roadside trees have a wine glass and diamond illumination motif, many changing to the colours of the Olympic games, giving off the appearance of a town by night. The lighting starts on the 31st of October, and are turned on everyday from 4:30pm until the next morning, for four months, ending in February.

December



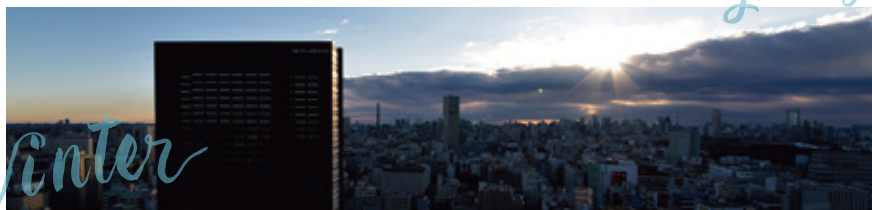
Both Hanazono Shrine, and Kio Shrine (behind Golden Gai on Kuyakusho Street, in the direction of Okubo) are perfect spots for Hatsumode (the first shrine visit of the new year) spots. Hanazono Shrine is often crowded with tourists, but Kio Shrine also has many people paying homage to Okubo District's patron god. The inner-grounds of Hanazono Shrine hold Asama shrines of entertainment, Inari shrines of virtue and influence, and "Osame Daimyojin" (a god). In the Asama shrines of entertainment, a ranka dedicated to famous singer Keiko Fuji (藤圭子)'s song "Keiko no Yume wa Yoru Hiraku" (圭子の夢は夜ひらく), is inscribed.

January

Hatsumode [January]



Winter



1st January 2015, from Kabukicho observe the first sunrise of the new year (from Shinjuku Prince Hotel)

TOHO Cinemas
Shinjuku
now open!

A perfect guide to Shinjuku's Toho building

The biggest cinema complex in Kabukicho

An out-of-this-world cinema experience, with 12 screens and 2,347 seats.

The newest innovative equipment

The first "IMAX® digital theater" sound system in Japan

In addition to the conventional ultimate-presence sound, you'll experience better power and precision. The fantastic new sound system supports 12.1ch and 12 independent speakers, with the addition of a sub-woofer. (Only for 12.1ch formatted movies)



Fantastic sound presence from cinema sound system, "DOLBY ATMOS"

"DOLBY ATMOS" presented by Dolby® is designed for natural, realistic sounds. Speakers from wall to ceiling, with original cinema processor included. It invites you to become enthralled in the film.

"TCX®" The overwhelming screen allows you the highest grade experiences (TOHO CINEMAS EXTRA-LARGE SCREEN)

Toho cinemas proudly presents to you its own large screen standard, "TCX". Please enjoy the extravagant experience with vibrant images.

Includes "luxury seats", designed simply to relax while watching movies



Electric reclining seats, "Premium Luxury Seat™"

Leather-bound electric reclining seats with footrests for absolute comfort.

"Front Reclining Seat™", designed for the spectacle of the big screen.

The front-row-only reclining seats allow you relaxation and the enjoyment of the big screen.

"Premium Seat Box®"

Leather-bound seats, also used for the overseas airlines help you to focus only on the movie. The faux-wood partitions create space for your privacy.

4D Theater "MediaMation MX4DTM" coming end of June

Now, with seats moving and reacting to the scenes, and water, wind, and various scents effects, films are not only to be watched, but to be felt.

TM & © 2015 TOHO Cinemas Ltd. All Rights Reserved.



Shops & Restaurants - Many popular restaurants all in one place!



Parking

If you are using the cycle parking lot, please dismount your bicycle or motorbike, and take the elevator to the basement.

Times Shinjuku Toho Building

The parking lot is on B1 (159 car capacity). Please use it if you are coming by car.

Utility Time

8:00-23:00

Anytime

30min / ¥200

Maximum fee 12 hours after the parking ¥1,000

*There is no maximum fee for standard parking space



Anytime 60min / ¥200

Maximum fee 12 hours after the parking ¥500

Parking limit

Standard parking:
Height 2.1m Weight 2.0t.
Machine parking:
Height 1.55m Weight 2.0t

Upper tier ¥100 / 24hours
Lower tier ¥100 / 12hours



Hotel Gracery Shinjuku

THE NEW KABUKICHO! - CASUAL & STYLISH

SPECIAL

Just opened this spring, our next-generation hotel is equipped with modern amenities, and provides our guests with a "comfortable space".

Our Remarkable Services

1 All rooms are equipped with separate bathroom and toilet facilities, and our original luxury beds

All rooms are equipped with separate bathroom and toilet facilities, allowing you to enjoy a relaxing bath time.

Our original luxurious beds, designed alongside Slumberland and recognized by the British royal family, provide you with the perfect opportunity for a comfortable nights sleep.

2 Our concierge service

We have a concierge counter on the eighth floor, where all kinds of information from hot tourist spots, to a quiet downtempo areas, can be requested.

3 A concierge counter for a foreign tourists

Our concierges speak English, Korean, Chinese, and Thai, so that you might have a pleasant experience.

4 Our fantastic security system

Our hotel's reinforced security system prohibits anyone from entering the guest's floor without a key card, providing you with a safe stay.

☎ 03-6833-1111 10:00-22:00 **MAP C-3**
 🌐 <http://gracery.com/shinjuku/>
 📍 1-19-1 Kabukicho 🕒 Check In 14:00-26:00 / Check Out 11:00



Hirano, the chief manager of the concierge desk of Gracery Hotel, Shinjuku.

Gracery Hotel has a concierge counter. We understand each guest has different needs, and we expect that more and more foreign tourists will visit Japan due to the upcoming Tokyo Olympics in 2020. Our concierges speak English, Chinese, Korean, and Thai, and help our guests to have a fantastic stay at our hotel. Since our hotel is located right in the centre of Kabukicho, not only can you see Tokyo's sights, but also enjoy Kabukicho from dawn till dusk. Please feel free to stay with us.



GODZILLA

GODZILLA ROOM



The moment you enter the Godzilla room, you feel as if you've entered another world, it's so exciting that you might forget to sleep.

The world of Godzilla can be experienced in all rooms, not just the living room. The inner room's walls are designed making use of many optical illusions that can only be experienced in person. We would like our guests to take many pictures of the rooms, and enjoy the world of Godzilla's throughout the duration of their stay.

The rooms are also equipped with amenities and special goods that only staying guests can take advantage of. Both families and hard-core Godzilla fans can enjoy our special rooms. Please enjoy the real world of Godzilla, not found anywhere else in the world!!



HOT POINT

Shinjuku is the place to enjoy Italian food with all five senses.



Bonsalute KABUKI



You can casually enjoy our hotel's restaurant, with reasonably priced meals and drinks. Our spacious restaurant covering more than 400m², with an open kitchen and a stone oven specially dedicated to pizza, creates dynamic, bustling space.

The interior decoration boasts oak-cut, Japanese-style latticework, and gives you a pleasing Japanese atmosphere. There are four different seating areas: a hall, counter seat, a private room, and a terrace; each of which provides a different experience. We gladly welcome any guests. One person, a small group, or an anniversary date.



Suzuki, a chef of the Bonsalute KABUKI restaurant.

Our restaurant's name means something like "healthy". My ingredients are my pride and passion.

We make simple, but sophisticated dishes, with hearty and delicious vegetables from specially contracted farmers, low-cholesterol pork, fish freshly caught from the ocean, a natural yeast pizza dough, and high-quality tomatoes from San Mazano, Italy. A casual restaurant where high quality dishes can be frivolously enjoyed.

☎ 03-6833-1702 11:00-22:00
 🌐 <http://gracery.com/shinjuku/restaurant/>
 📍 1F Shinjuku Toho Bldg.
 🕒 Breakfast 6:30-10:00
 Dinner 17:30-23:00

Hotel Wing International Shinjuku

117
STAY
HOTEL

Convenient access.
1min. from Seibu-Shinjuku station
by foot. Original bedding offers you
a comfortable stay at the hotel.

- + Single ¥10,900
- + Double (for two) ¥16,200
- + Twin (for two) ¥19,440
- + Breakfast (7:00-9:30) ¥1,030
- Japanese / Western Buffet ¥1,030

Free breakfast for
all paying customers.

☎ 03-3200-0122 **MAP B-3**

🌐 <http://www.hotelwing.co.jp/shinjuku/>

📍 2F-8F 1-21-7 Kabukicho 🕒 Check In 15:00 / Check Out 11:00

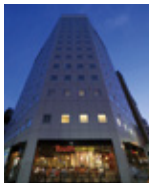


E-Hotel Higashi-Shinjuku

E-Hotel Higashi-Shinjuku is
conveniently located very close to
Higashi-Shinjuku Station's (Toei
Oedo Line, Tokyo Metro Fukutoshin
Line) A1 Exit.

From exit A1, the Meiji-Street
intersection can be immediately
found. It is easy to access and
extremely safe, the best location for
a hotel! You can also easily enjoy
Kabukicho from here.

Shopping areas and entertainment
hotspots are, of course, naturally
within walking distance.



☎ 03-5287-3588 **MAP F-1**

🌐 <http://www.shinjukuhotel.co.jp/>

📍 2-3-15 Kabukicho 🕒 Check In 15:00 / Check Out 11:00

Hotel Vintage Shinjuku



We guarantee a high-security, clean rooms.
Book online for a discount!

☎ 03-3205-6300 **MAP C-2**

🌐 <http://www.hotel-vintage.co.jp/>

📍 2-40-3 Kabukicho 🕒 Check In 15:00 / Check Out 11:00

Citadines Central Shinjuku Tokyo



"Citadines" is one of the residences
offered by Ascott limited, a big player
in the apartment industry, with over
200 buildings in 80 cities, over 24
different countries around the world.

In Japan, Citadines Central Shinjuku
Tokyo ranks in third, followed by "Citadines Shinjuku", and
"Citadines Kyoto Karasumagojo". It is the best fit for not only
for travel, but business trips as well.

There are 206 guest rooms, each at 17.5m², predominantly
double rooms. For long term stay, we prepare comfortable
30m² rooms with American Simmons beds, offering you the
highest standard of sleeping. All rooms are also furnished with
a free, high-speed broadband service.

☎ 03-3200-0220 **MAP D-4**

🌐 <http://www.citadines-cst.com/>

📍 1-2-9 Kabukicho 🕒 Check In 14:00 / Check Out 12:00

Shinjuku Prince Hotel



Shinjuku Prince Hotel, chic style
with a red brick exterior.
Stylish spaces offering exclusively
beautiful views, and much deserved
alone-time.

Shinjuku Pepe, with 571 rooms from
10F to 24F, and fashion stores from
B2F to 8F. The 2nd floor is directly
connected to Nishi-Shinjuku Station.
Also within 5 minutes of Shinjuku
Station (JR, Subway, and other lines)
by foot.

Omotenashi desk

It is our pleasure to help you enjoy a convenient stay.

☎ 03-3205-1111 **MAP A-4**

🌐 <http://www.princehotels.co.jp/shinjuku/>

📍 1-30-1 Kabukicho 🕒 Check In 13:00 / Check Out 11:00

Super Hotel Shinjuku Kabukicho

Opened 3rd of October, 2014.

Free fresh-baked bread for breakfast!
Free luxurious public spa or "Enbu no
Yu" (separated by sex).

LOHAS hotel, focused on your health
and creating a comfortable environment.

- + Single ¥9,000~
(1 person for 1 room)
- + Economy twin room ¥11,500~
(2 people for 1 room)
- + Extra double room ¥12,000~
(2 people for 1 room)

☎ 03-6855-9000 **MAP C-2**

🌐 <http://www.superhotel.co.jp/>

📍 2-3-9 Kabukicho 🕒 Check In 15:00 / Check Out 10:00

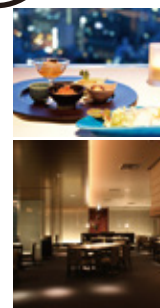
Citadines Central Shinjuku Tokyo
Buffet & Restaurant Stella117
AT HOTEL
FOOD

Enjoy our original authentic cuisine.
By day, bask in the light, stylish afternoon atmosphere.
By night, be cloaked in the upscale, cosy atmosphere.

☎ 03-3200-1718 **MAP D-4**

🌐 <http://www.citadines-cst.com/theme5.html>

📍 1-2-9 Kabukicho 🕒 Breakfast 7:00-10:00 / Lunch 11:30-15:00

Shinjuku Prince Hotel
Japanese Diner & Bar FUGA

Shinjuku Prince Hotel's kitchen chef

Keigo Okubo

1985 Joined Grand Prince Hotel, Takanawa
2005 Grand Prince Hotel, New Takanawa
"Saryo can"

2008 Worked in Belgium
Place chef for EU ambassadors

2012 The Prince Tower Tokyo
"Shichigen Chaya"

2014 Shinjuku Prince Hotel,
Japanese kitchen chef

From the top floor (25F) of Shinjuku Prince Hotel, you
can observe the starry night sky. What a dining area,
bar area, "premium pair seats" for couples. Private
rooms also available for small parties, and more. Caters
to all kinds of situations. Japanese based culinary
creations are sure to satisfy your palate.

☎ 03-3205-1111 **MAP A-4**

🌐 <http://www.princehotels.co.jp/shinjuku/restaurant/fuga/>

📍 25F Prince Hotel, 1-30-1 Kabukicho

🕒 11:30-23:00 (Sun, Mon and Tue until 22:00)

Prince Hotel
Shinjuku

Shinjuku Prince Hotel

TEL.03-3205-1111

Relaxing space on the top of the hotel

25F Japanese Dining & Bar
「FUGA」

Lunch 11:30A.M.~3:00P.M. **Dinner** 5:30P.M.~10:00P.M.



Dining

Bar ※~10:00P.M. on Sun. Mon. and Tue
6:00P.M.~11:00P.M.



Bar Lounge

Shinjuku Prince Hotel
1-30-1, kabuki-cho, Shinjuku-ku, Tokyo

Seibu Group
セイブグループ

SEIBU SHINJUKU PePe

TEL.03-3232-7777

Enjoy shopping!

Can do 100 yen shop	無印良品 MUJI Accessories/ Household goods	UNI QLO UNIQLO Casual wear
COEN RETAIL STORE over GENERAL STORE Ladies' / Men's / Kids' / Fashion goods	ABC MART ABC-MART Shoes	CAYHANE Folk crafts and ethnic goods



Duty free shop

7F MUJI 6F SHIMAMURA MUSIC
5F UNIQLO 4F hi-net grace / Zoff Plus
3F move by ontime
American BLVD. Xinc / Junky SPECIAL

AMERICAN Blvd.

PePe

SUBNADE

新宿サブナード

One of the largest underground shopping districts in the Shinjuku area

There are about 100 fashion stores, restaurants, and general goods and services shops. Enjoy eating and shopping at Subnade.



Fashion and Sundries

There are many fashionable shops with unique goods, the perfect place to have any girl's dream image become a reality.

Miscellaneous Services

There are many convenient shops, providing you with various services, leisure, and who support your fancy style.

Gourmet

The restaurant district. The place to find what you would like to eat. From cafés to restaurants, any place to fit your mood.

☎ 03-3354-6111

📍 B1F, 1-1 Kabukicho
🕒 Shopping 10:00-21:00
🕒 Restaurant 11:00-23:00

MAP D-6



www.subnade.co.jp



Certain eligible stores offer duty free shopping. Please see our website for the location of these stores. You will need to complete a written declaration in-store to be eligible for duty free shopping.

Some stores accept/exchange foreign currency. Please use 4-chome J-MARKET.

The following credit cards are accepted.



※Please note that some individual stores may not accept all credit cards shown.

Feel free to bring your car!

PARKING INFORMATION

Flat-rate hourly parking available!

Kabukicho Kobanmae's Parking Lot



Paying the maximum charge means you don't have to worry about the time while shopping. All parking spaces are flat, allowing you to park easily and safely. We will be waiting for your visit.

☎ 03-3208-1202 MAP B-3

🌐 <http://kabukoup.iinaa.net/>

📍 1F HUMAXPavilion Shinjuku Kabukicho 1-20-1 Kabukicho 📍 Mon-Sun

Parking fee (automobiles)

¥200 / 20 min
Maximum fee ¥1,000 per every 5 hours.
¥2,200 per every 24 hours.

Parking fee (motorcycles)

¥100 / 30min, No maximum fee

Sabnade Parking



☎ 03-3356-7561 MAP D-6

🌐 <http://www.subnade.co.jp/parking/>

📍 1-2-2 Kabukicho 🕒 24hr

24/7, 400 car capacity

Spend over ¥3,000 at a store in the Subnade Shopping and Restaurant district to become eligible for 1 hour free parking. (Valid only same-day)

Parking fee (automobiles)

+ Large Vehicles ¥360 / 30min

+ Standard Vehicles ¥320 / 30min

+ Motorcycles ¥220 / 30min

+ Max Height: 2.1m

We are looking for partner stores!

We have fixed-term contracts for automobiles as well as motorcycles

Car share service



Hygia Parking



Hygia Parking Lot (B2, B3F). Please enter via the parking gate, left of the front entrance.

☎ 03-5285-8148 MAP B-3

🌐 <http://www.hygeia.jp/parking.html>

📍 B2F, B3F Hygia, 2-44-1 Kabukicho

🕒 24-7 (except maintenance days in March)

B2-B3F contain 248 spots. (Machine Parking)

Max Height: 2.1m Width: 2.0m Length: 6.0m Weight: 2.0t

*Motorcycle parking is NOT available.

Please enjoy Shinjuku without worrying about your parking charge.

¥2,500 for 12 hours * After 12 hours, you will be charged by the hour.

Charged by the hour (flat rate for high-roof automobiles)

3:00-14:00 ¥200 / 30min 14:00-3:00 ¥250 / 30min

- * All prices are tax-included.
- * Using a fix-term ticket outside of the valid time will result in being charged by the hour.
- * Parking certificates can not be issued.
- * Inquiries for fixed-term tickets should be directed to Hygia Parking Lot Maintenance Office (03-5285-8161)
- * Fixed-term ticket purchasing hours: 12:30-21:30

Coupons available!

¥2,500 coupon x11 ¥250 coupon x22 ¥200 yen coupon x22
¥25,000 ¥5,000 ¥4,000

* ¥250 tickets are only valid from 14:00-3:00.
* ¥200 tickets are valid from 3:00-14:00.

Fixed-term contract customers need not worry even when all spaces are filled.

+ **Mon-Sat fixed-term contract ¥41,140 / month**

*Not valid for use on Sunday and public holidays.

+ **Mon-Fri fixed-term contract ¥36,000 / month**

*Not valid for use on Saturday, Sunday and public holidays.

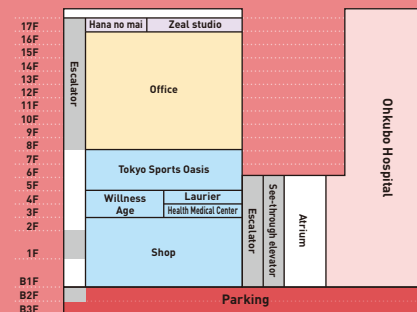
+ **Evenings only fixed-term contract ¥36,000 / month**

*Only valid from 18:00-08:00

+ **14 days fixed-term contract ¥20,570**

+ **14 days fixed-term contract (daytime) ¥15,420**

*Only valid from 07:00-19:00



Gourmet Guide

KABUKICHO

P17 - Japanese Food / Teppanyaki (Iron plate cooked food) / Chinese Food / Noodles

P24 - Map of Kabukicho

P26 - Restaurants / Ethnic Foods



Guidebook-holder Deals!

Japanese Pub, Food, Sushi, Local Cuisine

The Izakaya (Japanese Pub) of Fish and Love

Nodapin (のだびん)

☎ 03-6273-8083 MAP B-2

☐ 3F Ishii Bldg, 2-45-7 Kabukicho

🕒 17:00-24:00 / Tue-Sun

Open and bustling for over 30 years, an izakaya with an out-house atmosphere anybody can enjoy. Even though it is in Kabukicho anyone can stop by because of the cosy atmosphere.

The sushi and sashimi is delicious, and reasonably priced. Please indulge in our splendid rice wines, and delicious foods in which we take great pride.

A comment
from Mr. Machida

Born in Gifu prefecture, raised in Shinjuku, continually living there for over 37 years to date.

Two generations, both me and my father cooked, whilst my mother ran around the restaurant. You may love eating and drinking here whilst feeling right at home. Please feel free to stop by.



Right by the station!

Japanese Cuisine, Western Cuisine

Kurumaya Main Store

☎ 03-3232-0301 MAP C-3

☐ 2-37-1 Kabukicho

🕒 Lunch 11:30 - 14:30

Dinner Mon-Fri 17:00 - 21:00

Sat 15:00 - 21:00

Sun 15:00 - 20:30

Closed: December 31st, January 1st

💰 Spend over ¥3,000 per person to become eligible for 1 free drink.



Away from the hustle and bustle of Shinjuku, you can relax with ease. It has a high reputation due to style of food, which is made with a combination of traditional techniques and a new perspective on taste.

Teppanyaki, Japanese Cuisine

Kurumaya Bekkan

☎ 03-3352-5566 MAP C-6

☐ 3-21-1 Shinjuku

🕒 11:00-23:00

(Sun until 22:30)

Closed: January 1st

💰 One free drink (draft beer, glass of wine, or soft drinks)



Japanese Cuisine Restaurant
(Stake, Teppanyaki, Shabushabu, Sukiyaki)

The Perfect Place for Chicken and Beer

Toribeer Shinjuku

☎ 03-6457-3299 MAP C-4

☐ 1F 1-11-4 Kabukicho

🕒 18:00-3:00 / Sun 17:00-23:30

Mon-Sun

💰 Drink (under ¥380) or half-sized grilled dish free!



You can enjoy truly fresh, succulent chicken, flown over daily from Miyazaki prefecture!



- ・LED照明
- ・イルミネーション
- ・防犯カメラ

ご用命は

**黄光電器産業株式会社**

本社 〒110-0005 東京都台東区上野7-2-8

TEL: 03-5830-7235

工場 〒370-1201 群馬県高崎市食貫野町3100

TEL: 027-346-2111

<http://www.sankodenki.jp/>

Taishu Kappo Aso (大衆割烹 あそう)☎ 03-3200-5821 **MAP B-4**

☐ 1-22-4 Kabukicho

☎ 11:30-24:30 / Mon-Sun

Taishu Kappo Aso is located in an area of Kabukicho known as "Ebi-dori" (or "Shrimp Street"). A must-eat is the "Ebi no shiyaki" (salt-grilled shrimp), grilled over a charcoal fire. In addition to the grilled shrimp, they are proud to offer dishes of the current season. Enjoy "Sumibiyaki" with fresh ingredients for stamina in the summer, and of course "Nabe" in the winter. Koagari (raised tatami-floored seating areas), horigotatsu, and table seating is available.

**Shinjuku Unatetsu** (新宿うな鐵)☎ 03-3200-5381 **MAP C-4**

☐ 1-11-2 Kabukicho

☎ 11:00-3:30 / Mon-Sun

Savour nine types of Eel and Kushiyaki, as well as a-la-carte dishes exclusive to this specialized restaurant. A numerous selection of choice-sake from over Japan is offered.

Hanabi (華火)☎ 03-6265-9608 **MAP E-3**

☐ 7F Lee Bldg, 2-11-4 Kabukicho

☎ 18:00-3:00 / Mon-Sat



Café-like sofa seats have been prepared in this venue in the hope visitors can casually enjoy delicious sushi. Champagne and wine is offered alongside authentic nigirizushi. The gold art piece behind the counter is a must-see.



Mr Nozaki, the manager of Hanabi.

**Uoshin** (魚心 新宿総本店)☎ 03-3232-6607 **MAP C-3**

☐ 1F Ashibe Kaikan, 2-36-3 Kabukicho

☎ 11:00-8:00

Uoshin is the place to go for a sushi dinner in Shinjuku. Visitors can spend a luxurious time in a private room until morning. Choose from counter seats, table seats, and private rooms in this comfortable lounge.

**Shinjuku Shunsai** (新宿 旬彩)☎ 03-3203-3141 **MAP D-4**

☐ 1F Asahi Bldg, 1-9-8 Kabukicho

☎ 17:00-5:00 / Mon-Sun



Quality Japanese Cuisine skilfully prepared by artisans with Japanese quality, seasonal ingredients. Feast on fresh fish direct from Tsukiji, horse-meat sashimi from Kumamoto, and other seasonal ingredients procured from all over Japan.

**Izakaya Umaimon** (居酒屋うまいもん)☎ 03-3232-3500 **MAP C-4**

☐ 1F Kabukicho Bldg, 1-12-6 Kabukicho

☎ 18:00-4:30 / Mon-Sat



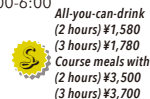
Savoury Japanese sake and seasonal dishes available.

Wadokoro Noren (和処 暖簾)☎ 03-3209-0599 **MAP C-4**

☐ 3F Kabukicho Bldg, 1-12-6 Kabukicho

☎ Mon-Thu 18:00-3:00 / Fri, Sat 18:00-6:00

Private rooms available for parties of 4-10 members. Spend quality drinking time in this serene atmosphere.

**Kaisen Izakaya Rinka** (海鮮居酒屋 凜火)☎ 03-3207-4711 **MAP B-4**

☐ 2F Kawano Bldg, 1-26-7 Kabukicho

☎ Mon, Fri 17:00-5:00 / Sat 15:00-5:00

☎ Sun 15:00-24:00

☎ Closed: January 1st

Fresh fish directly from the port can be enjoyed chargrilled, or as sashimi, or sushi.

East Exit Shop (東口店)☎ 03-6278-9816 **MAP B-5**

☐ 8F Daiichi Asakawa Bldg,

☐ 1-17-12 Kabukicho

☎ Mon-Fri 16:00-24:00

☎ Sat 15:00-24:00 / Closed: Sun

Fresh seafood, and dishes of the season provided at reasonable prices.

**Yakitori and Stews Hajimeya/Hajimeya BAR** (はじめ屋)☎ 03-3200-0123 **MAP B-4**

☐ 1F Kawano Bldg, 1-26-7 Kabukicho

☎ 17:00-5:00 Closed: January 1st

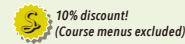
☎ BAR ☎ 17:00-2:00 / Closed: January 1st

Uses freshly produced chicken processed each morning! Come and relish the rare portions, and the twist-grilled chicken-skin prepared with a trade-secret recipe, only available here.

**Kyushusakaba Hakatanagare** (九州酒場博多流。新宿歌舞伎町店)☎ 03-3207-5653 **MAP B-4**

☐ B2F Kawano Bldg, 1-26-7 Kabukicho

☎ Mon, Thu 16:00-24:00 / Fri, Sat until 5:00 / Sun 13:00-24:00 / Closed: January 1st



A wide array of local dishes, shochu, and local sake from the Kyushu region, all available at reasonable prices. Along with the signature "motsu nabe", the "Takiniku shabushabu", and original nabe with fresh pork slices laid over vegetables are popular.

Japanese Private Dining, Hiriyuzu (和食個室ダイニング 灯溜閣)

☎ 03-3344-0297

☐ 4F Prince Bldg, 1-4-1 Nishi-shinjuku

☎ Lunch 11:30-14:30 / Dinner 17:00-23:30

A single minute walk from Shinjuku station's west-exit, this is a stylish venue with great ambience.

Japanese and foreign creative cuisine using seasonal ingredients.

A full discount for one member given with course reservations for parties of over 8.

**Sumibikushiyaki Kazekumo** (炭火串焼 風雲新宿店)☎ 03-3202-8991 **MAP E-2**

☐ 1F Metro Plaza 1, 2-13-6 Kabukicho

☎ 18:00-4:00 / Mon-Sat

A serene sumibikushiyaki restaurant providing a selection of dishes using Oyama Chicken from the Tottori prefecture, with 8 counter seats, and 8 table seats.



Teppanyaki, Okonomiyaki, Shabushabu, Chinese Food



Tonkatsu Niimura
(とんかつ にいむら本店)
Main Restaurant
☎ 03-3200-5900 **MAP B-4**
☎ 1-23-10 Kabukicho
🕒 10:30-2:30 / Mon-Sun

Free ice cream!

Opened in Kabukicho 54 years ago, our Tonkatsu is oven baked! The Tonkatsu is cooked piece-by-piece by masters with over 10 years of experience.

Shabushaybu Niimura
(しゃぶしゃぶ にいむら本店)
Main Restaurant
☎ 03-3205-2200 **MAP C-4**
☎ 1-14-3 Kabukicho
🕒 11:00-2:00 / Mon-Sun

Draft beer or soft drink free!
(except for lunch time)

You can enjoy thin slices of Japanese beef with our special sesame sauce made of high-quality materials, taking up to six hours to make everyday.



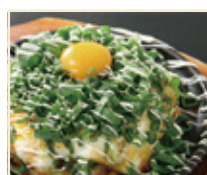
Yamagishi restaurant manager's comment

The main dishes we serve are Shabushabu Sukiyaki, and a seasonal dish as an appetizer which changes every two months to match with seasonal sake. We are proud of our high-quality, and healthy party dishes.

Okonomiyaki & Teppanyaki Okan

☎ 03-3209-3165 **MAP D-3**
☎ 2F Pia Shinjuku, 2-10-6 Kabukicho
🕒 Mon-Sat 18:00-6:00
Sun 17:00-23:00

A cosy Teppanyaki and Okonomiyaki restaurant. Our special Okonomiyaki, and other fresh foods can be enjoyed.



OKONOMIYAKI & TEPPAN



Okonomiyaki Honjin Suki (本陣 鮎)

☎ 03-3207-0058 **MAP B-5**
☎ 2F Komatsu Bldg, 1-17-2 Kabukicho
🕒 12:00-23:00

Our restaurant is equipped with Takoyaki hotplates, used to cook by yourself! There are 18 kinds of Okonomiyaki and 25 kinds of Monjayaki, ranging from standard to unique dishes. You can definitely find the perfect dish!



Izakaya (Japanese-style pub) Honjin (本陣)

☎ 03-3232-4794 **MAP B-5**
☎ 4F Komatsu Bldg, 1-17-2 Kabukicho
🕒 12:00-23:30 / Mon-Sun

A popular restaurant at Kabukicho's gateway. You can eat as much as you like at a great price!!

Charcoal-grilled Offal and Bar Restaurant Rien

(炭火ホルモン焼酒家 李苑)

☎ 03-6302-1035 **MAP C-4** 10% discount!
☎ 2F KT Bldg, 1-12-1 Kabukicho
🕒 17:00-27:00

The special secret sauce made by The Great Omoni, and the charcoal-grilled offal are mouth-watering!!



Barbecue and Bar Restaurant Rien

(焼肉酒家 李苑)

☎ 03-5292-9211 **MAP F-4** 10% discount!
☎ B1F Shinjuku 5-1 Bldg, 5-18-16 Shinjuku
🕒 11:30-14:00 / 17:00-24:00

Miyazaki beef is the best beef in Japan!! It matches Omoni's special secret sauce!!

Black Hole

(ブラックホール 歌舞伎町本店)

Kabukicho Main Store ☎ 03-6457-6089 **MAP D-5**

☎ 1F Toyo Bldg, 1-2-5 Kabukicho
🕒 17:00-6:00 / Sun 17:00-24:00

10% discount!

We cook all of our meat dishes with a special salt, allowing you to savour the original flavours. Enjoy your own style "barbecue" (or "yakimiku") with a soy-based sauce, a matured black sesame oil, and eight varied kinds of onions, each with their own subtle flavour.

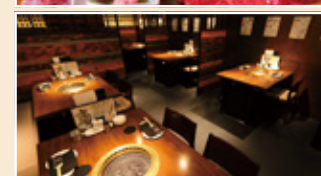
Central Road Restaurant (セントラルロード店)

☎ 03-3203-4129 **MAP C-5**

☎ 1F 1-15-5 Kabukicho
🕒 Lunch 11:30-15:00 (Sat, Sun 15:30)
Dinner 17:00-24:00 / Mon-Sun

Get our high-quality meat!!
If over 4,000yen is spent,
we will discount 10% per person!!
Both offers will only be provided guests
arriving before 18:00.

Please enjoy your own personal yakiniku style inside our cosy and fashionable restaurant. With many foreign guests have visiting our restaurant, we can also provide an English menu.



Korai (高麗)

☎ 03-3204-2929 **MAP D-1**

☎ 1-12-1 Okubo
🕒 11:00-24:00 / Mon-Sun

Free soft drink for lunch!
Free kimchi for dinner!

Our Korean barbecue dishes of high-quality Japanese black beef have received great praise. Please enjoy a genuine Korean barbecue inside our comfortable restaurant.



Tokaien (東海苑)

☎ 03-3200-2934 **MAP C-5**
☎ 8F Tokaien Bldg, 1-6-3 Kabukicho
🕒 11:30-2:00 / Mon-Sun

Korean-style barbecue restaurant with high-quality flavours and a clean environment. A course meal, buffet-style barbecue, delicious liquor, and Korean-style bar are on offer.

Osaka-ya (大阪家)

☎ 03-3209-0760 **MAP B-5**

☎ B1F 1-17-12 Kabukicho ☎ 24hr Mon-Sun

Established in 1980, the specialty Okonomiyaki (savory pancake with various toppings) restaurant in Kabukicho, Osaka-ya will celebrate its 35th anniversary in 2015. In this old-fashioned Showa era themed restaurant with homemade style Okonomiyaki, perfected, loved, and enjoyed over many years will satisfy your



Mow-Mow Paradise Kabukicho Bokujo

(モーモーパーadies歌舞伎町牧场)

☎ 03-3208-0135 **MAP B-3**

☎ 8F HUMAX bldg, 1-20-1 Kabukicho
☎ 16:00-23:00 (Sat, Sun 11:30-23:00) / Mon-Sun



Mow-Mow Paradise is a reasonable all-you-can-eat shabu-shabu & sukiyaki restaurant. You can choose whatever you feel like from our variety menu, ranging from meat and vegetables, to soup.

Shizendo - Asian Private Dining

(自然洞 アジアン個室ダイニング)

☎ 03-3343-1511

☎ 6F Prince Bldg, 1-4-1 Nishi-Shinjuku
☎ Lunch 11:30-14:30 / Dinner 17:00-23:30

1 minute walk from Shinjuku Station's west exit, with various compartmental seating for up to 20 people. Extravagant spaces with blessings of nature! The best choice for joint parties, girls-only-parties, and class reunions!



Konan-Saikan (湖南菜館)

☎ 03-3207-8288 **MAP B-4**

☎ 4F Daiichi Otaki Bldg, 1-23-13 Kabukicho
☎ 12:00-24:00 / Mon-Sun

A Konan (type of Chinese dish) restaurant produced by one of Kabukicho's prominent figureheads, Lee Xiaomu. Strikingly tasty dishes, cooked with chilli peppers and herbal Chinese ingredients are served in this relaxing, stylish interior restaurant. Konan has been ranked as the 4th of 8 most popular Chinese dishes. Konan's origins lie in the use of "Senkou-ratsu (a kind of spice which burns even your stomach)", blended with chilli peppers, Chinese herbal ingredients, and black bean sauce. It's a health-food, perfect for increasing metabolic activity, vitality, and beauty. Chefs from the well known restaurant "Mogehanten" in China use Japanese ingredients, carefully picked by the owner himself. You're welcomed at Konan-Saikan with Japanese and Chinese collaboration dishes. Please stop by and enjoy a "real Konan dish".

Taiwanese Cuisine, Aoba (台湾料理 青葉)

☎ 03-3200-5585 **MAP C-4**

☎ B1F Kabukicho Bldg, 1-12-6 Kabukicho
☎ 11:30-2:00 (Sun 11:30-23:00) / Mon-Sun

46 years of serving real Taiwanese dishes, Aoba is a restaurant where you can enjoy healthy food based on "Isyokudougen" (a balanced diet leads to a healthy body). With more than 200 dishes to choose from!



Lee, the owner of Aoba.

Acknowledged for his 10+ years experience in famous restaurants and hotels around Taiwan. He later moved to Japan to work for restaurants in Roppongi and Shinjuku. Highly as a Taiwanese food chef, he's the present owner and head chef of Aoba, the modern Taiwanese restaurant.



Noodles -Soba, Udon, Ramen-



Aizu Kitakata Ramen Bannai (会津喜多方ラーメン 坂内)

☎ 03-5273-2161 **MAP B-4**

☎ 1-24-6 Kabukicho ☎ 11:00-23:30 / Mon-Sun

Serves an honest Kitagata palette, the genuine taste of Hakata. Famous for melting roast pork.

Mensho Taketora (麵匠 竹虎, Shinjuku main branch)

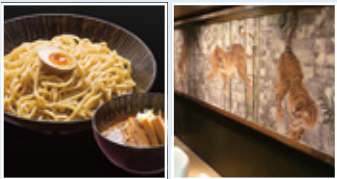
Main branch ☎ 03-5292-5825 **MAP C-3**

☎ 1F Ashibe Kaikan,
2-36-3 Kabukicho
☎ 11:00-9:00 / Mon-Sun

Shinjuku branch ☎ 03-5155-5589 **MAP B-4**

☎ 1F Nakadai Bldg,
1-27-5 Kabukicho
☎ 11:00-9:00 / Mon-Sun

Taketora often has a line of people waiting to go in. In addition to the food (such as Ramen, Tsukemen, snacks), and drinks, we also have private rooms! (Tsukemen are cold Chinese noodles accompanied by soup to dip).



Karamiso Menya Akaoka

(辛味噌 麵屋 赤岡)

☎ 03-5155-0901 **MAP C-4**

☎ 1F Ebisu Kaikan, 1-10-5 Kabukicho
☎ 11:00-4:00 / Mon-Sun

Garlic fueled Karamiso ramen is our specialty, and will stimulate your appetite. It's not too thick or heavy, so it's popular among women too!

Rishiri (利しり)

☎ 03-3200-2951 **MAP C-3**

☎ 1F Yanagi Bldg, 2-27-7 Kabukicho
☎ 18:00-5:00 / Mon-Sun

Rishiri's ramen has been loved by all who stop by after a night out for over 33 years. Serving large portions of 4 different ramen dishes, all using soft-shell turtle extract soup as a base, the ramen will revitalise you in both body and mind.



Sangokuichi (三國一)

☎ 03-3354-3591 **MAP B-6**

☎ 3-24-8 Shinjuku
☎ 11:00-23:00

A quiet, old-school udon place based in Shinjuku. Reservations are accepted for parties of all sizes.



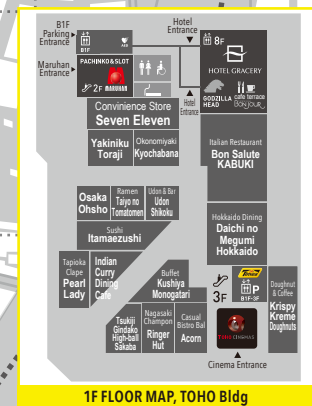
Pure Stone Milled Soba Masudaya (純石臼挽蕎麦 増田屋)

☎ 03-3204-4147 **MAP C-3**

☎ B1F 2-38-3 Kabukicho
☎ 11:00-23:45 (Sun 11:00-23:00)

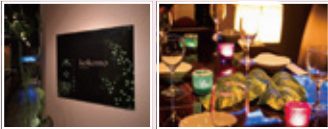
Opened over 50 years ago, the recently renovated Masudaya has a large water wheel inside, evoking sentimental feelings. A modern Japanese, yet quiet place where you can enjoy soba, snacks, and Japanese sake. A huge stone mill inside the shop is used by a soba master to prepare the noodles, giving them a wonderful fragrance.





Restaurant, Ethnic

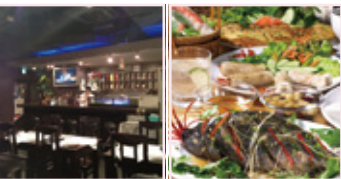
Kigimoe **kokomo** (木々萌)
☎03-3232-0266 **MAP B-4**
☐4F J-gold Bldg, 1-22-9 Kabukicho
🕒Mon-Sat 17:00-2:00 / Sun 17:00-24:00
Izakaya (Japanese pub) Kigimoe kokomo.
An exotic atmosphered Asian izakaya, just recently opened in Kabukicho.



Kiitos (キートス)
☎03-6233-9738 **MAP E-3**
☐3F Metro Bldg, 2-11-7 Kabukicho
🕒18:00-5:00
A scandinavian themed restaurant with a casual environment, and inexpensive cocktails and wine. A hidden trove of delicious homemade meals. From young to old, everyone can have a good time, including first time customers. Go ahead and stop by at least once!

Tomorugin no Yozakura (ともる銀の夜桜)
☎03-3344-0298
☐4F Prince Bldg, 1-4-1 Nishi-Shinjuku
🕒Lunch 11:30-14:30 / Dinner 17:00-23:30

A single minute walk from Shinjuku's west exit, a place with a girls only course. The atmosphere is a fusion of Japanese modernism and Western beauty! Lunch is ¥880, Dinner is ¥3,000, and all-you-can-drink courses start from ¥2,880. If an 8 person or more reservation is made, 1 person goes free.



Vietnamese Cuisine **Hanoi** (ベトナム料理 ハノイ)
☎03-6233-9739 **MAP C-4**
☐B1F Kabukicho Bldg, 1-12-6 Kabukicho
🕒Lunch 11:00-15:00 / Dinner 17:00-24:00 / Fri, Sat until 4:00
If you like Vietnamese food in Japan, you'll surely love Vietnam. This is why we started this restaurant. The flavour, ingredients, and service all emanate the essence of Vietnam. Our only hope is that customers dropping by feel like they are truly in Vietnam.

Café Diner **ORO** (カフェダイニング オロ)
☎03-6457-3240 **MAP C-4**
☐1F Kabukicho Bldg, 1-12-6 Kabukicho
🕒11:30-7:00 / Sun 12:00-23:30

Facing the main street of Kabukicho, a café diner with a terrace. Open from lunch to dawn, drop by any time. In the afternoon, feel free to relax in the café, and in the evening, enjoy a real meal from the diner. All kinds of drinks are for sale.



Hawaiian Dining Bar **Alee Beach** (ハワイアン ダイニングバー)
☎03-6380-3265 **MAP B-5**
☐1F Planecity Shinjuku Bldg, 1-17-11 Kabukicho
🕒12:00-15:00 / 18:00-5:00 / Mon-Sun
Open until 5am, a bar with sand covering the floor. Colourful southern feeling cocktails, with Hawaiian local foods. A bar popular with women!



Resort Diner **Cascade** (リゾートダイニング カスケード)
☎0120-706-734 **MAP D-4**
☐B1F Pasela Resorts Shinjuku Main Store, 1-3-16 Kabukicho
🕒Mon-Sun 17:00-7:00 / Sun 17:00-5:00
In Shinjuku, the city that doesn't sleep, a Bali-resort themed diner serving meals from around the world. A small waterfall stands inside, giving off an authentic Bali-resort feeling, with a wide open area containing the main dining area, and a standing bar.

Bistro **Amusette** (ビストロ アミュゼット)
☎03-5272-6570 **MAP C-5**
☐2F Yoshikawa Bldg, 1-6-13 Kabukicho
🕒17:00-2:00 / Mon-Sat

A restaurant of vegetable sommeliers and patisseries. With Japanese beef, vegetables, and desserts, we aim to be an upstanding restaurant. Free glass of sparkling wine before your meal!



Pizzeria **Lumen** (ピッツェリア ルメン)
☎03-3205-1207 **MAP E-4**
☐1F Mogami Bldg, 2-8-3 Kabukicho
🕒18:00-2:00 / Mon-Sat

We make a limited amount of pizzas every day. All dishes from starters to mains are made with organic vegetables, and have a healthy balance. Thanks to our stone oven and natural yeast, our pizzas have a good crispy exterior, but a soft, fresh interior with and have exquisite flavours.

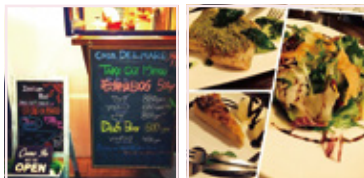


Bistro&K
☎03-6273-9555 **MAP C-5**
☐1F 1-16-12 Kabukicho
🕒Mon-Fri 17:00-4:30 / Sat, Sun 11:00-4:30

Japanese oysters served all year, with a special sommelier-culled wine and champagne selection. Pizza and pasta are both popular.

Casa **DELMARE** (カーサ デルマーレ)
☎03-6278-9637 **MAP D-3**
☐1F Sachi Bldg, 2-28-15 Kabukicho
🕒19:00-9:00

Simply a cheap, enjoyable, stone fired pizza restaurant! Parties, and regular dining available. Evokes the feeling of a Sicilian Beach. Come wind down and relax.



Dining Bar **SALAS**
☎03-3203-5747 **MAP D-4**
☐1F Hisako Bldg, 1-9-1 Kabukicho
🕒19:00-7:00 / Closed: Sun
Alcoholic Drinks: More than 300 different types of drinks, including seasonal fruit cocktails. More than 70 different kinds of wines, and over 100 different types of whiskey. Cuisine: Mainly original Japanese dishes.

Sweets & Galette
Squall Café
☎ 0120-356-312 MAP C-5
📍 1-6-6 Kabukicho
🕒 11:30-7:00 / Mon-Sun

Exquisite sweets, crepes, and galettes prepared by a master pâtissier. This is a petite and charming café.



Ever-popular Galette

The current Galette news is that it's very popular among women as a healthy and stylish dish using buck wheat flour, which also goes exceptionally well with alcohol!

Takeaway available

The pâtissier's specially prepared original crepe with a chewy texture, is extremely popular. Both eat-in and takeaway available! Why not try exploring Kabukicho with crepe in hand?

Magical Sweets

Magical sweets to give you a magical time. We recommend our monthly-changing limited-time-only sweets. Treat yourself to our pâtissier's secret specialty, prepared with seasonal ingredients.

KABUKICHO
Sweets Future

Excellent for light meals before leaving the hotel.

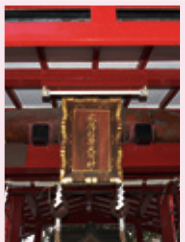
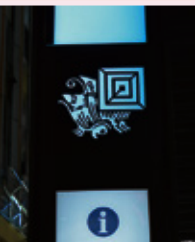


Designers Private Diner **ACT**
☎ 03-3343-1512
📍 6F, Prince Bldg, 1-4-1 Nishi Shinjuku
🕒 Lunch 11:30-14:30 / Dinner 17:00-23:30

As seen in the media! A resort private room diner, where women can thrive. A relaxing private space with dusky lights, and skin-beautifying, hydrating, exotic dishes.

Italian Private Room Dining **ARK lounge**
☎ 03-5990-5432
📍 4F, 1-4-5 Nishi-Shinjuku
🕒 17:00-23:30 / Lunch: (Reservation) 11:30-14:30

1 minute walk from the west exit of Shinjuku Station, the casual, completely private rooms are perfect for an all-girls gathering. An Italian diner, ideal for birthdays and anniversaries.



SINCE 2015

ANYWHERE WE GO
ANYTHING WE DO
WE NEED
NO ADDRESS

Event Management
Graphic Design
Video Production

noadd Inc.
http://noadd.today
["Like! KABUKICHO" Guidebook's Design]

JIM BEAM
WORLD'S NO.1
BOURBON.

Beam **SUNTORY**

※2013年販売数量 (IMPACT NEWSLETTER February 1 & 15 2014号より)

SUPER CRISP, SUPER CLEAR.
JAPAN'S FAVORITE BEER.
Experience Super Dry taste for yourself.

ASAHI SUPER DRY

Consumption of alcohol by individuals under 20 years of age is prohibited by Japanese law. Driving under the influence of alcohol is prohibited by law. Drinking while pregnant or breastfeeding may be harmful to the fetus or infant. Drink moderately. www.superdry.jp Customer service ☎0120-011-121 ASAHI BREWERIES, LTD.

In the 1970's-80's, rock, disco, and GS (Group Sounds) music flourished in Kabukicho, the home of the Shinjuku Koma Theatre, known as the sanctuary of enka (Japanese traditional music). In 2008 after 52 years of operation, the Koma Theatre closed down, and in 2015 the Shinjuku Toho Building was raised in its place. Whilst the theatre is remembered fondly, there are still many live houses invigorating the music culture. In 2014, "CONNECT Kabukicho Music Festival", Kabukicho's first ever block party was held, which featured EDM and rock music, and as such, Kabukicho has always been at the forefront of music culture. Here is an interview with Yu Hirano, manager and representative of the "Loft" live house in Kabukicho.



THE TOWN WHERE ENKA, JAZZ, AND GS COEXIST.

In the 60's, Shinjuku (especially Kabukicho) was the holy grail of jazz culture. Students could scarcely afford record players, or the import of records costing around 2,000 yen (30,000 yen was the average college graduate wage at the time). A recorder was too expensive, and Walkmans didn't exist back then, so we would always go to jazz cafes searching for good music, and legendary records. Around the area, there were a lot of Utagoe cafes (cafes in which customers would sing together), and long standing jazz cafes, like "Mokuba" and "Pony". There, young people would with only a cup of coffee for hours on end, waiting for a song they requested. At these cafes talking was prohibited, so people would just read novels whilst listening to the music coming from the big speakers. In addition to jazz, the Koma Theatre (the sanctuary of enka), would hold concert shows by Saburo Kitajima, Ikuzo Yoshi, and many other artists, and old classic places like "ACB", and "La Scene" would have Tigers, and Drifters live performances everyday.

THE YOUTH, AND ROCK.

A new wave of music started in the 50's, "rock". This new era of music then took off with the debut of The Beatles in the 60's. Back then, The Beatles were called conveyers of culture, and were tremendously popular. So much so, that these days they even appear in Japanese textbooks. GS, which is heavily influenced by The Beatles created a shockwave throughout Japan. Unfortunately Japan was not yet used to rock bands, and anyone holding a guitar was perceived as a hooligan. By the beginning of the 70's people started accepting rock culture, and so the golden age of rock music and youths began. Young people who loved staying out at night would do so at rock DJ bars, such as "Rolling Stones", or "Yellow Submarine". After the booms of a few live houses, "Shinjuku RUIDO" (established in 1972), and "Shinjuku Loft" (established on the west side of Shinjuku in 1976, later moving to Kabukicho in 1995) appeared, and lead the way for the band boom of the 90's. GS aside, the 1970's-80's was Shinjuku's golden age of disco. "Apple House", "New York, New York", and many other discos were the hangout spots for the younger generations.



THE SACRED PLACE OF MUSIC Shinjuku Kabukicho

- | | | |
|--|---------|---|
| 1 Shinjuku FACE
☎03-3200-1300
🌐 http://shinjuku-face.com/ | MAP B-3 | 〒7F, 1-20-1 Kabukicho
An entertainment space for combative sports, music concerts, plays, and much more. |
| 2 Shinjuku Live Space MARZ
☎03-3202-8248
🌐 http://www.marz.jp/ | MAP B-3 | 〒2-45-1 Kabukicho ☎14:00-22:00
We provide high quality sounds. The high ceiling constructed building gives a feeling of spaciousness. Our PA system and lighting also of note. |
| 3 Shinjuku BLAZE
☎03-5155-5990
🌐 http://shinjuku-blaze.com/ | MAP B-3 | 〒B2F, 1-21-7 Kabukicho
The holy land of pop idols in the very heart of Shinjuku, live house Shinjuku BLAZE. |
| 4 Shinjuku RUIDO K4
☎03-5292-5125
🌐 http://www.ruido.org/k4/ | MAP D-4 | 〒B2F, 1-2-13 Kabukicho ☎13:00-22:00
We have substantial amount of equipment, such as digitized PA mixer board, mirror moving lighting, and LED bars. |
| 5 Shinjuku Motion
☎03-6825-5858
🌐 http://motion-web.jp/index.html | MAP B-3 | 〒5F, 2-45-2 Kabukicho ☎18:00-23:30
Capacity of up to 120 people.
A new place that brings you good music. Please stop by! |
| 6 Live House Marble
☎03-5272-3558
🌐 http://marble-web.jp/top.html | MAP B-3 | 〒B1F, 2-45-2 Kabukicho ☎14:00-22:00
A surrealist music, comedy shows, art.
All kinds of expression. |
| 7 Shinjuku LOFT
☎03-5272-0382
🌐 http://www.loft-prj.co.jp/ | MAP C-3 | 〒B2F, 1-12-9 Kabukicho
A long-established live house that has watched over Shinjuku's rock music scene since 1976. |
| 8 LOFT PLUS ONE
☎03-3205-6864
🌐 http://www.loft-prj.co.jp/ | MAP C-4 | 〒B2F, 1-14-7 Kabukicho
Established as Japan's first talk-show live house in 1995. |
| 9 Naked Loft
☎03-3205-1556
🌐 http://www.loft-prj.co.jp/ | MAP B-1 | 〒1F, 1-5-1 Hyakunincho
An imaginative space with an expansive style cafe.
Talk shows and live music shows are held every night. |



KABUKICHO. CHANGING WITH THE TIMES.

As the east's largest entertainment district, Kabukicho is an enigmatic district, the city that never sleeps. Thousands of restaurants, video game arcades, movie theatres, live houses, and many other facilities line the streets hundreds of metres in every direction, Kabukicho is known for being a "nightless city". Back in the day, brothels could be found right next to jazz or disco cafes, and restaurants right next to clothing shops for hostesses. This was not at all out of place at the time, but around 2000 many of the brothels were exposed, and their numbers dropped. Kabukicho has slowly been changing over the years from what it once was. In late 2014, the cinema complex at the time with the largest screen in Japan, the Shinjuku Milanoza, closed down. However, Toho Cinemas Shinjuku was established on the site of the former Koma Theatre, and now stands as the biggest cinema complex in Japan. In preparation for the 2020 Olympics, a new era of Kabukicho seems to be coming to fruition.



The 1970-80's was the golden age of disco for Kabukicho. The young would dance all night in "New York, New York". (Photo: GAGA HUMAX Inc.)



YU HIRANO

The manager of the live house "Loft".
Representative of the Loft Project Inc.

I'm the manager of the live house "Loft", born in Tokyo on the 10th August 1944, also known as the representative of the Loft Project Inc.. Shinjuku Loft's goal has been to create a space where rock fans from all generations can meet up and have a good time together. Our theme is "Rockin' Communication". At loft you can relax, grab a drink after the show, and have great opportunities to get to know other people. A place full of new chances for "communication". That's "Rockin' Communication Shinjuku Loft".

ROCKIN' COMMUNICATION

In addition to having a live floor (approx. capacity 500), Shinjuku Loft provides a pub-style space for waiting and relaxing (approx. capacity 100). Genre indifferent, free live performances, DJs, fashion shows, beautician competitions, and many more events are being held, providing a performance space for artists. Private parties are also possible. Anyone visiting to see a certain band can enjoy a pint after the gig, and experience fresh music with fresh faces. A place full of new chances for "communication".
"Rockin' Communication Shinjuku Loft".

The relaxing, healing, modern Asian resort
Welcome to Pasela

Pasela Resorts Shinjuku Main Store

FLOOR INFORMATION

8F	Darts & Sports Bar	LOS CABOS
7F	Event & Party	Gamran Ball
6F	Wedding & Party	GRACE BALI
4-5F	Karaoke	PASELA
3F	Wedding & Party	GRACE BALI Beach & Leaf
2F	Karaoke	PASELA
1F	Entertainment Bar	CAPCOM BAR
B1F	Restaurant	Resort Dining CASCADE

☎ 0120-706-733 MAP D-4
〒1-3-16 Kabukicho
☎ Mon-Fri 15:00-8:00 Sat, Sun 12:00-8:30

1F Capcom Bar

💰 Free drink if you order 2 dishes or 2 drinks!

Mon-Fri 14:00-23:30 Sat, Sun 11:30-23:30

Try playing the newest video games, and tasting Pasela & Capcom collaboration special foods, and drinks! We also sell Capcom goods. We have Capcom development team talk show, the recording of Capcom's official live show "Hagitoko!", and other fantastic events.

2, 4, 5F Karaoke Pasela

💰 We offer free honey toast!

Mon-Sat 18:00-6:00 Sun 18:00-5:00

- ★ Enjoy private karaoke rooms with our speciality, honey toast.
- ★ All rooms are designed to emulate relaxing Asian resorts.
- ★ You can also enjoy watching sports, playing darts, and drinking alcohol in the stylish Resort Dining & Darts Bar (same building).



Shinjuku Yasukuni Store (新宿靖国通り店)
☎ 0120-184-419 MAP C-5

〒1-16-2 Kabukicho
☎ Sun-Thu 11:30-7:00 Fri, Sat 11:30-8:00

B1F
Darts & Sports Bar Party
Gamran Ball

☎ Mon-Thu 18:00-5:00
Fri 18:00-6:00
Sat 14:00-6:00
Sun 14:00-5:00

1F~8F

Karaoke Pasela
☎ Mon-Thu 11:30-7:00
Fri, Sat 11:30-8:00
Sun 11:30-7:00

8F Sports & Darts Bar - Los Cabos

💰 No cover charge!

One of the biggest darts bars in Shinjuku, with 12 "DARTSLIVE" darts machines! Enjoy our varieties of cocktails, and our authentic Texmex.



Pasela Sweet Shinjuku Island Store
(パセラスイート新宿アイランド店)

☎ 0120-759-140 MAP D-3

〒B1F Bali Island, 2-22-10 Kabukicho
☎ Mon-Fri 18:00-8:00 / Sat, Sun 12:00-8:00

Tree Monkeys Café

Here all kinds of entertainment can be found! We have a billiard table and 8 dartboards, in a chic space reminiscent of hotel resort bars. We also have DARTSLIVE2, the newest darts machine!



SHIDAX

Shinjuku Central Road Club (新宿セントラルロードクラブ)

☎ 03-5287-1260 MAP B-4

〒1-17-10 Kabukicho

☎ Mon-Thu, Sun 11:00-5:00 / Fri, Sat until 6:00

Shinjuku Kabukicho Club (新宿歌舞伎町クラブ)

☎ 03-3204-8833 MAP C-5

〒1-5-2 Kabukicho

☎ Mon-Thu, Sun 11:00-5:00 / Fri, Sat until 6:00

A safe and secure Karaoke restaurant.

We prepare restaurant quality food, which includes lunch for ¥620. An all-you-can-drink plan package available for after parties comes with all-you-can-drink, for ¥3,000! Room charge included!

Prepared Ladies' rooms and gorgeous Golden rooms.

With TVs and DVDs, our audio-visual rooms are fully equipped. Enjoy to your hearts' content, the unique Shidax service.

Sports Bar SECTOR 7G

☎ 03-3205-8722 MAP C-5

〒1F Sato Bldg, 1-8-1 Kabukicho

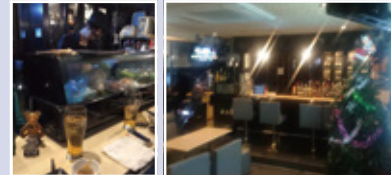
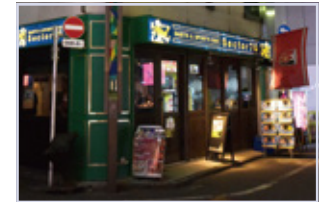
☎ 18:00-6:00 Mon-Sun

Reserved sports bar in Shinjuku!

With darts, bingo, microphones, BGM, DVD, and huge monitors available, have as much fun as possible.

Everything is free! Have your private party exactly the way you want.

You can watch exhilarating sports relays on the big screen.



Meshi bar GIVAS

☎ 03-6265-9009 MAP D-4

〒4F, 1-3-15 Kabukicho

☎ 19:00-5:00

💰 Our daily special, free!

We offer food and alcohol, an enjoyable atmosphere, and more than 15 daily specials! With a projector and 4 screens, you can enjoy karaoke with pumping music and bright visuals in our cosy rooms. We accept reservation for small groups.

AniON STATION Shinjuku (アニオン STATION 新宿店)

☎ 03-6273-8080 MAP B-4

〒B1F Brick Bldg, 1-17-10 Kabukicho

☎ 11:00-23:00

AniON STATION is a café and bar, made by anime song lovers for anime song lovers!

Café time 11am-4pm, ¥1,000/hour

Bar time 4pm-11pm ¥1,000/hour



Nazotomo Café Shinjuku

☎ 03-6205-5606 MAP B-5

〒7F Don Quijote Bldg, 1-16-5 Kabukicho

☎ Mon-Fri 16:00-23:00 Sat, Sun 10:00-23:00

A public space, where you can enjoy drinks, light meals, and "Mission Cubes". Try solving puzzles from 10 different levels and themes. We offer you a new type of entertainment!



Clubs, Lounges, and Bars



Gatsby House

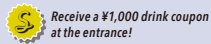
☎ 03-6302-1584 MAP E-3

〒B2F Lee3 Bldg, 2-11-4 Kabukicho

🕒 22:00-5:00 / Tue-Sat

A luxurious, gorgeously presented space.

Enjoy your time to the fullest at our club, furnished with elaborate designs.



nest

☎ 03-5285-1160 MAP C-4

〒B1F Hayashi Bldg, 1-14-7 Kabukicho

🕒 18:00-Last / Mon-Sat

A bar-lounge where you can enjoy an authentic burlesque dance show. This entertainment, constructed upon the day-to-day training of professional dancers, is indispensable for a night in Kabukicho.



SUNTORY Pub Club Rotary

☎ 03-3205-1801 MAP D-4

〒6F Furin Kaikan, 2-23-1 Kabukicho

🕒 19:30-23:30 / Mon-Sat

All-you-can-drink, ¥6,000! Shochu and whiskey included!
(Always ¥6,000 /60 min.)

We support the businessmen of Shinjuku.



PUB&STANDING BAR St. James

☎ 03-3200-5556 MAP B-5

〒1F Daiichi Metro Bldg, 1-23-14 Kabukicho

🕒 Mon-Thu 12:00-3:00 / Fri, Sat 12:00-5:00

Sun 12:00-24:00

Located just beyond the Ichibangai arch; the symbol of Kabukicho, this is a cash-on-delivery British pub convenient for travellers.



Heart Dinin'Bar &K

☎ 03-3205-1888 MAP C-5

〒4F, 1-16-12 Kabukicho

🕒 Mon-Sat 18:00-4:30 / Sun 18:00-24:00

Unusual for Shinjuku, this is a privately owned store.

The concept of this dining-bar is "Kokoro" (heart).



Entertainment

Shinjuku Oslo Batting Centre (新宿オスロバッティングセンター)

☎ 03-3208-8130 MAP C-2

〒2F, 2-34-5 Kabukicho 🕒 10:00-1:00

A beloved, well-known spot in Kabukicho, running for over 20 years.

Come visit us not only for batting, but also for darts, air hockey and more!



Shinjuku Batting Centre

(新宿バッキングセンター)

☎ 03-3200-2478 MAP D-2

〒2-21-13 Kabukicho 🕒 10:00-4:00 / Mon-Sun

Shinjuku Batting Centre is one of Kabukicho's landmarks!

No special baggage is required, as we provide free rentals for gloves and shoes. We await your visit with pamphlets explaining how to play in Japanese, English, Korean, and 2 types of Chinese.

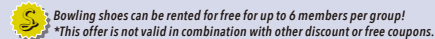


Shinjuku Copa Bowl (新宿コパボウル)

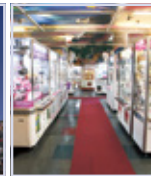
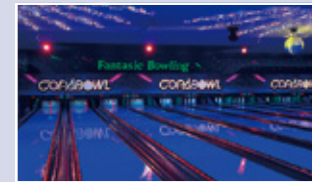
☎ 03-3200-6947 MAP B-3

〒4F, 1-20-1 Kabukicho

🕒 Mon-Thu 11:00-6:30 / Fri, Sat 11:00-8:00 / Sun 10:00-7:00



An amusement facility open all night in Kabukicho. Bowling, Ping-Pong, darts, etc. can be enjoyed by all.



Shinjuku Playland Carnival

(新宿プレイランドカーニバル)

☎ 03-3208-0125 MAP B-3

〒1F, 1-20-1 Kabukicho 🕒 10:00-24:45 / Mon-Sun

The largest game-centre (arcade) in the Kabukicho area. Our machine line-up includes many popular models, and whether you are looking to pass the time before meeting friends or a drinking party, or if you want to enjoy a full day of fun, its sure to satisfy anyone. We humbly await your business.

We work closely
with the local
community.

Coca-Cola East Japan

Coca-Cola East Japan Co. Ltd.

<http://www.ccej.co.jp>"Coca-Cola" and "コカ・コーラ" are registered trademarks of The Coca-Cola Company.

Host Club

FOR LADIES

Spend an easy, perfectly transient time at venues recommended



Smappa! Hans Axel Von Fersen

☎ 03-5155-2911 **MAP D-3**
 ☎ 2-28-15 Kabukicho ☎ 18:00-24:00 Tue-Sun

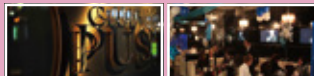
Named after Count Hans Axel von Fersen, the only man that Marie-Antoinette loved, our venue is built to present women with a love that is one and only. We will make your stay an experience never to be forgotten.

First time customers
 ♦ 2 hours for ¥3,000 (Fixed fee). Includes all-you-can-drink draught beer, and glass wines.

CLUB OPUST

☎ 03-3205-3185 **MAP D-3**
 ☎ B1F, 2-21-2 Kabukicho ☎ 19:00-24:00

Experience genuine excitement, both intellectually and sensually. Although late-coming as a wine producer compared to France and Italy, the California Opus Wine has rapidly established its position in the world as a top wine brand. The club name "OPUST" takes after this Opus wine, to coincide with our aspiration to become the No. 1 host club in Kabukicho.



First time customers
 ♦ Fees ¥3,000 per person
 ♦ 2 hour basis - Drink specials Includes 1 bottle of Shochu, all-you-can-drink wine (red, white), and all-you-can-drink tea beverages
 *The all-you-can-drink menu may change due to stock availability.



APITS

☎ 03-3205-3122 **MAP D-4**
 ☎ 9F, 1-2-15 Kabukicho ☎ 18:00-24:00

What comes to mind when you hear "Host club"? A luxurious interior, champagne glasses being endlessly emptied... Some of you may shy away from such an unfamiliar world. However, that is exactly the type of people that "APiTS" wishes to invite. It is our goal to increase your happiness, and we live to hear your lively voices, saying you had "so much fun!"

First time customers
 ♦ Enter before 20:00 → ¥1,000/2 hours (fixed fee)
 ♦ Enter after 20:00 → ¥3,000/2 hours (fixed fee)
 ♦ all-you-can-drink menu is available

VENICE

☎ 03-5155-5626 **MAP D-4**
 ☎ 8F, 1-2-15 Kabukicho ☎ 19:00-24:00

We will entice the emotions hidden deep behind your mask to surface. A mysterious beautiful masquerade makes a modern revival. Your interest in the scent of danger is your "invitation" to the party.

First time customers
 ♦ ¥3,000 / 2 hours (all-you-can-drink)



Cabaret Club

FOR GENTLEMEN

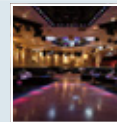
by the Kabukicho Concierge Committee.

Executive Club Ranmaru (関○)

☎ 03-3209-8925 **MAP E-2**
 ☎ 1F, 2-13-6 Kabukicho ☎ 19:00-1:00 / Mon-Sat

"RANMARU," a high-class cabaret club for adult visitors. Celebrating our 26 year anniversary since our grand opening in Shinjuku Kabukicho, our wish has always been to continue to be a cabaret club beloved by all.

*Offers limited to first time customers,
 Customers bearing, or claiming to have read the official Kabukicho Guidebook,
 and customers with no shimei (choice of companion!)*
 From 19:00 - ¥6,000 / 60min (service charge and tax included)
 From 21:00 - ¥8,000 / 60min (service charge and tax included)



PROUDIA

☎ 03-3232-6572 **MAP C-3**
 ☎ 1F, 2-26-3 Kabukicho ☎ 20:00-LAST

Located in the centre of Shinjuku Kabukicho, PROUDIA is known in the cabaret industry for its consistent high-quality cast members. In this comfortable room, on a large-scale floor, both fantastic and mystical, relish the utmost "twinkling experience" to your heart's desire.

<STANDARD: Set Fee (60 min)>
 20:00 - 20:59 ¥7,000, 21:00 - Closing ¥8,000
 Cover charge ¥2,000, Shimei charge before or after seating ¥3,000
 Service charge 25% *Consumption tax will be charged separately

AMATERAS

☎ 03-3204-1248 **MAP D-3**
 ☎ B1F, 2-23-12 Kabukicho ☎ Mon-Sat 20:00-Last

Amaterasu, the greatest-scale cabaret in all of Kabukicho, with the biggest wine cellar in Kabukicho. Spend a leisurely time here regardless of whether you are a wine lover or not.

20:00 - 20:59 (60 min) ¥8,000
 21:00 - Closing ¥9,000
 Cover Charge ¥2,000, Shimei charge after seating ¥3,000
 Shimei ¥3,000 Service Charges 25%
 *Consumption tax will be charged separately



Convenient Shops

Introducing several useful stores, open late at night

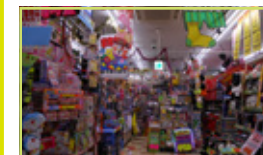
Don Quixote

☎ 03-5291-9211 **MAP B-5**
 ☎ 1-16-5 Kabukicho ☎ Mon-Sun

From super-brand items to variety products, perfect for gifts, this is a general discount store where a large number of souvenirs can be found. Complete with a duty-free counter, this store is also very popular amongst customers travelling abroad.

Shinjuku Store
 ☎ 03-5292-7411 **MAP C-1**
 ☎ 1-12-6 Okubo ☎ Mon-Sun

A general discount store with the largest selection of goods in Tokyo ranging from foodstuffs, commodities, household electric appliances, and even brand items. You will lose track time while having fun shopping in this store, filled with wondrously low prices and amusing surprises.



NUXE Pharmacy

☎ 03-5272-1991
 ☎ 1F, 2-38-1 Kabukicho
 ☎ Tue-Sat 20:00-9:00

MAP C-3



The "infirmary" of Kabukicho. A late-night operating pharmacy in Shinjuku Kabukicho open from 18:00-09:00.

Pharmacist introduction: **Nakazawa Hiroaki**
 I started Kyokushin Karate after entering University, and created a club on campus for karate enthusiasts. I am a member of the Kyokushin Kaikan to this day. Being set on eventually establishing my own business while I was still a student, I continued to save money while I worked, and finally achieved my own independent business at age 35. My boundless vitality keeps me going strong.

Seen on TV! Fabulous Crossdressing Bar!!

okama bar ひばーガール®

Enjoy the precious time with "okama".
We have good drinks and amazing shows.
A mixture of beauty and laughs!
That's the ultimate entertainment.

1set: 90min
¥6,150
(includes tax)

SHOW TIME!!!

Wed - Sat
1st show starts 19:00
2nd show starts 22:00
Possibility of delay due to preparation

1 set: 90 min / ¥5,000
Entry Fee: Free for first time customers
(usually ¥2,000)
Service charge 15%/tax 8%.
**Only when there's no choice of companion*

***At least 1 Japanese speaker must accompany foreigner customers.**
English speaking staff are not always available

☎ 03-5292-1275 MAP D-5
📍 5F, 1-2-8 Kabukicho
🕒 18:00-LAST Mon-Sat

Welcome to Golden Gai

Shinjuku Golden Gai. (新宿ゴールデン街, lit. Shinjuku Golden Street)

A small "town" where until sunrise, precious experiences can be had at bars reminiscent of the good old days.



1-1 Kabukicho, a small block next to Hanazono shrine which used to be known for its black market. The black market was originally located in the area east of Shinjuku station after WW2, but it had to be moved elsewhere due to government crack-down in around 1950. It was moved to where the Tokyo tram used to run, the site of which is now a promenade called "seasons' path". At the time, shops running illegal prostitution services were lined up side by side, and as a result the area was often referred to as a "blue line" district. After the Anti-Prostitution Act (1958) was put into action, previous operations ceased and became a strictly a bar business area, and the area was renamed "Golden Gai". During the preparations for the 1964 Tokyo Olympics, Golden Gai faced the threat of complete abolition due to public security measures. Intellectuals and journalists who cherished the area passionately fought against it, and eventually saved Golden Gai from its disappearance, and the place still has the 50s-60s atmosphere today. Since 2000, despite the passing of generations, Shinjuku's Golden Street has, like the rest of Tokyo, kept up with the times. The number of "modern style" bars managed by younger generations has been steadily increasing, but the spirit of the place has never changed. Searching through the maze of the various bars, and finding the perfect one to fit your mood, with a great atmosphere, and an easy to get along with bartender, is one of Golden Gai's truest characteristics. There are presently around 250 bars in the area, all keeping with the 50's-60's atmosphere, which is still to this day adored by many. A trip to Shinjuku Golden Gai promises precious experiences, and time well spent.

"Your first time in Golden Gai?"

An Interview with the owner of SUZUBAR.



Golden Gai's origins lie in the black market that existed about 60 years ago. Whilst running their legitimate businesses, restaurants of the time also managed illegal prostitution operations on the side. In 1958 it's name became Golden Gai, and the place was reestablished as a unadulterated bar area. There are supposedly around 250 bars in the Golden Gai area, but no one is really sure of the actual number. No-one can or even wants to comprehend the whole of Golden Gai. This might even be one of the reasons for the area's mysterious vibe.

What would I recommend? Well...

By the bottom of your second or third pint, you're usually already having a laugh and really getting to know the bartender. However, such interaction is not limited to between you and the bartender, and also extends to the customer sitting right next to you. Anyone that just happens to be in the same bar could also easily become your cohort. There are no titles or status barriers between you and anyone else you meet at the bar, and together you simply have the time of your life. Every bar is cramped, with little room, and you'll often encounter customers who arrived before yourself, thoughtfully moving to another bar to make space for you. The night has just begun. With around 250 bars, pub crawls are Golden Gai's style, and if you can't decide where to go next, just ask the bartender, or the person next to you. Golden Gai's synonym is "Once-in-a-life-time encounter". There will always be someone around to suggest the next drinking spot, and though it might seem bewildering at first, the more you visit the more you'll get used to it. Take your time to look around, we're all willing to help you find the perfect bar. By going to your first bar, you'll find your second, and at your second, you'll find your third. Doing things this way means you'll be able to take a good walk around Golden Gai, and have a great night out.

Fortune-teller Takako Acalanatha

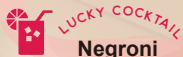
Making use of birthdates and tarot cards, someone's talents and abilities can be easily told.

Taking your year, month, and day of birth, putting them consecutively side-by-side, and adding each digit to the next, then doing the same for the result until you have a single figure will result in a number corresponding to a fortune below.

(For example: 23/11/2007) $(2+3+1+1+2+0+0+7 = 16, 1+6 = 7)$

The Magician

You exude positivity, and are a strong leader. Seize the day!



Negrini

The High Priestess

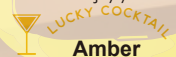
With fantastic coordination, you are calm, modest, and a good listener. It's important to be yourself.



Blue Moon

The Empress

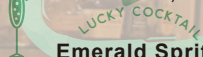
Creative, sociable, and optimistic, you start new relationships with a bang. Go with the flow, and enjoy yourself.



Amber

The Empress

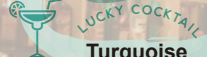
Down-to-earth, you have the power to accomplish anything. Once you start, you'll finish to the end. Keep a clear head and choose the best direction for your future.



Emerald Spritz

The Hierophant

You are very open minded, and have a deep insight. Good at changing your environment, you go with the flow. Don't be afraid to follow your heart.



Turquoise

The Lovers

You are very responsible, and always looking out for others. Working with the less fortunate can bring you self-enlightenment.



Pearl

The Chariot

Inquisitive in nature, you have a talent for analysis. Make sure to have enough alone time to contemplate yourself.



Amethyst Fizz

Strength

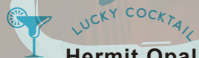
An authoritative figure. You have great vigor. Do as you always do, and keep up with your ambitions.



Diamond Sonic

The Hermit

Very kind and sympathetic, a humanitarian to the end. Your outlook on life brings you great insight.



Hermit Opal

*All of these fortune cocktails can be ordered at "Colours."

The place to meet diviners, zodiac drinks for sale

Gallery Café Bar Colors

☎ 03-3207-1338 🌐 <http://bar-colors.com/>

📍 G2 Street, 1-1-9 Kabukicho

🕒 Mon-Thu 19:00-24:00

Fri, Sat 19:00-4:00 / Sun 13:00-24:00

A Golden Gai gallery bar with a chic, white interior design. Commonly hosts exhibitions of writers work, and fortune-telling & healing events. For further information check out our blog at: <http://ameblo.jp/bar-colors/>



Takako Acalanatha

Linked by fate to Acala, the "immovable" one. A fortune teller also specialised in healing and channeling. Works closely with "Colours". If you wish to have an audience with her, please call our shop, or check our blog.

A City represent its people

A History of KABUKICHO



Kihei Suzuki

In 1698 a new Shukuba (or "post station" for travellers to stop by), Shinjuku, was established on Koshu Kaido between Nihonbashi and Takaudo (15 km apart). During the Tokugawa era, the area which has almost reached 700,000 m², belonged to the Naito family (Lords of the Takato domain, present-day Takato city), and as a result new station was named "Naitoh Shinjuku". After a lot of back-and-forth (the constant creation and abolition of the red-light district), eventually the station flourished as a transportation and logistics hub.

After World War II, the Japanese government began reconstruction of major cities that had been destroyed in air raids. There were also examples of private-sector-driven reconstruction, one of them being Kabukicho. Led by Kihei Suzuki of the Association of Readjustment and Reconstruction of Shinjuku, the idea was to turn Kabukicho into an amusement centre.

Prior to this, the area of Kabukicho had been called the "1st district of North Tsunohazu". When Kihei Suzuki returned from wartime evacuation, he came up with the idea of constructing both a performing arts space, and a moral amusement centre, and with the help of Mohei Minejima, the area's greatest landowner, his plan suddenly became a reality. Whilst searching for a name for the new cultural district, they had been attempting to attract a Kabuki theatre to the area, so a Tokyo based regional planner, Hideaki Ishikawa came up with the name "Kabukicho". As a result, on April 1st 1948 Kabukicho was born. Kihei Suzuki bought in Kikuza (a Kabuki theatre), movie theatres, entertainment halls, and dance halls to Kabukicho. However, when it came to construction time, the government suddenly started to regulate special building constructions, and put restrictions on bank accounts, halting all progress. Kabukicho ran in the Tokyo Cultural and Industrial Exhibition in 1950. A pavilion for the exhibition was constructed, and became the base of today's theatre district.

In 1956, the Tokyu Bunka Kaikan (Tokyu Cultural Centre), the Milano Movie Theatre (biggest theatre in Japan), and the Tokyo Ice Skating Rink were all completed side-by-side. The Shinjuku Koma Theatre, later called the "Holy Sanctuary of Enka", opened in the same year, and thus the prototype of a "moral amusement centre", previously a mere dream, had been completed.

Around the Kabukicho area, red-light districts still existed, and were one of the biggest attractions of the area, contrasting with the healthier, cultural centre side of Kabukicho, having movie theatres and ice skating rinks. In 1985, the New Entertainment Business Act came into force and brought vast change to the area's destiny. Video game arcades, discos, and such, all suddenly closed down, making way for new adult-entertainment businesses.



The original arch built on the 1st avenue of Gekijo street in 1956. The sign says "Shinjuku Entertainment Centre Kabukicho"

In the middle of 1980s “Shinjuku Cats”, which employed college girls, created a hostess bar boom, and from 1989, call-girls, hostess bars and host clubs became drastically popular.

Hideaki Ishikawa, one of the founders of Kabukicho, wanted the area to be an European style democratic city with an public square at the centre where citizens could talk and relax. He firmly believed that citizens should clean the area themselves, and that the citizens attitudes determines the city's atmosphere. “A city represents people” he said, contrasting the life of the city with the life of the people.

Written by Koichi Teratani



Central Road in 2006



Central Road in 2015



In 1984, the hostess bar “Shinjuku Cats” opened, and the phrase “Cabaret Club”, meaning hostess bar was first adopted. Shinjuku Cats hired college girls, and shattered peoples “only professional women treat customers” perception of the bar or club business. This triggered an influx of cabaret clubs, which became an enormous business.

Meet new people!

Have a wonderful time volunteering with all kinds of different people to keep a clean city!



“green bird” is a project built on the idea that a “clean city makes for a heart clean.” Pledge not to litter, and you can be a member of the project. We mainly keep cities tidy, but your presence is not always required, just remember littering is not cool. Our project is composed of shop staff, companies, organizations, individuals, and is growing bigger every day.

Our slogan is “Keep clean, keep green.”

Let's work together for a cleaner and cooler city.



green bird

Kabukicho Team

Cleaning Schedule <http://www.greenbird.jp/team/kabukicho/>
Facebook <https://www.facebook.com/greenbird.kabukicho>
Leaders Mai Kakinuma, Kenta Hori
Cleaning Days 1st and 3rd Monday every month
Time 19:00
Meeting Spot In front of Shinjuku Toho Building
 (next to Shinjuku Cine City) in Kabukicho

What to Bring We bring all required cleaning equipment.
 Please wear comfortable clothes.
Miscellaneous The project will be cancelled in case of rain.
 We can help, but can't compensate for accidental injuries.
 Take full responsibility for your actions, and take good care of yourself.

HISTORY OF KABUKICHO

- | | | | |
|--|--|--|---|
| 1945 4・5 The whole area was destroyed by aerial-bombings | 1964 2 Kabukicho's first Benzaiten Setsubun was held | 1978 7 Kabukicho became Kabukicho 1-chome | 2004 An influx of Korean culture swept over Japan |
| 10 Rehabilitation Organisation established | 5 Shinjuku National Railway Minshu Station was opened | 1979 3 Central Road (previously Chuo Street) completed | 2005 1 Kabukicho Renaissance Committee formed |
| 1947 12 Completion of rehabilitation | 10 Tokyo Olympics were held | 1980 10 "Big Shinjuku" ward's first large festival was held | 2006 5 Businesses Affecting Public Morals Regulation Law re-revised |
| 1948 4 On the 1st April, Kabukicho was born | 1965 10 10AM-10PM, "floating population" of Kabukicho reached 154,000 | 11 American Boulevard was opened | 11 Kuyakusho Street Illumination project started |
| 7 Businesses Affecting Public Morals Regulation Law was created | 1967 1 Group burial in Kabukicho for Suzuki Kihei was held | 1981 8 The first Kabukicho Furusato Festival was held | 2008 12 Shinjuku Koma Theatre and Shinjuku Toho Hall closed down |
| 1949 4 The last Tokyo Metropolitan train stop moved to Kabukicho | 1968 7 Postcode system devised | 11 10am-12am "floating population" of Kabukicho reached 270,000 | 2011 3 Tohoku Earthquake and Tsunami |
| 4 Kabukicho Rehabilitation Organisation established | 10 Kabukicho Crime Prevention Ceremony was held | 1985 2 New Entertainment Business Act put into effect | 4 "Safety and Relief" temporary police station established in Kabukicho |
| 1950 6 Exhibition of Industrial Culture held | 10 Extremist students rioted on International Anti-war Day | 1987 7 Shinjuku Tax Office created (formerly Yodobashi Tax Office) | 2013 9 Shinjuku Ward Anti-touting Law put into place |
| 1951 1 Ward office moved from Ushigome to Kabukicho | 1969 The arch was completed on the Gekijo Road's first street | 8 Okubo Hospital stopped operation (Health Plaza Hygeia) | 12 Addition of LEDs to Gekijo Street's Arch |
| 1952 3 Seibu Shinjuku Station constructed | 10 Shinjuku Police Station established (formerly Yodobashi Police Station) | 1993 4 Metropolitan Health Plaza Hygeia implemented | 2014 2 Kabukicho Concierge Association formed |
| 1956 12 On the 1st, Shinjuku Tokyo Culture Centre was completed | 1970 3 Tokyo Metropolitan withdrew from Kabukicho | 1993 6 Marriage of the Crown Prince | 12 Shinjuku Tokyo Milano Building "Milano Za" closed down |
| On the 28th, Shinjuku Koma Theatre was established | 1972 11 10am-10pm, "floating population" of Kabukicho reached 260,000 | 1998 5 Businesses Affecting Public Morals Regulation Law revised | 2015 3 New "Central Road" built |
| Kabukicho Promotional Co-operative Society created | 1973 9 Underground parking and shopping complex "Subnade" were developed | 1999 1 Birth of the Europe's Euro currency | 4 Shinjuku Toho Building and Hotel Gracery were opened |
| 1963 6 Kabukicho Shopping District Association born | 9 At the entrance of Chuo Street scramble crossroads were constructed | 2001 4 Koizumi joined the cabinet | 2016 3 Sine City Square Construction scheduled to finish |
| 1963 11 Tokyo Metropolitan's Suginami Line was destroyed | 1975 4 Shinjuku Fire Station established (formerly Yodobashi Fire Station) | 9 44 people tragically lost their lives in a building fire | |
| 1964 1 Coming-of-age ceremony held for the first time in Kabukicho | 1977 3 Seibu Shinjuku Station skyscraper constructed | 2002 7 Shinjuku's first Eisa Festival was held | |

KABUKICHO

The word "Kabuki" comes from the verb "Kabuku".

Kabuku means "to wear gaudy costumes" or "to exhibit deviant behavior". This kind of behavior gained popularity at the start of the Edo period, in Kyoto and Edo areas, among people known as "Kabuki-mono" (Kabuki people).

From its beginnings in Keicho era Kyoto, Kabuki dance has always had elements of Kabuki-mono. This led to today's traditional performing art "Kabuki".

Although their dream of attracting a Kabuki theater did not come to fruition, the forerunners hoped the area to be "a moral amusement center". Despite that, many Kabuki-mono were attracted to the district because of the name "Kabukicho". These two spirits contrasted each other extremely well, and the area's possibilities blossomed.

Everything is within only a 600m² area.

I heard someone say "Kabukicho is really a peaceful place. No matter your past, you can live a stress-free life here. Kabukicho is such a warm-hearted place, it accepts everyone".

Kabukicho is such a busy area, it seems like it's holding a festival all year round. It is a city with lots of attractions and temptations, but, in fact, it's also a calm and peaceful city where Kabuki-mono gather to relax.

This official guidebook "Like! KABUKICHO" is an introduction to the city.

From it, you can get an idea of what Kabukicho is like, but as you get personally more familiar with it, you will find many of its real charms. Kabukicho's "secrets" are not written in any guidebook, but instead hidden within the city. Please find and enjoy Kabukicho's atmosphere.

Welcome to Kabukicho.



The symbol of the Kabukicho Shopping District Promotion Association's group, combines two Kabuki symbols: A swallowtail butterfly, and traditional Kabuki crest. They represent the ideas of Kabuki theater and a moral amusement center, the concepts they tried to build Kabukicho on.

CREDIT

Like!KABUKICHO 2015

Publisher: Kabukicho Concierge Committee/ Kabukicho Shopping District Promotion Association

5F Kabukicho Shopping District Promotion Association Bldg, 1-19-3 Kabukicho 160-0021

HP: <http://www.kabukicho.or.jp/>

FB: <https://www.facebook.com/kabukicho.jp>

Chief editor / Production chief: Kouichi Teratani (Executive officer of Kabukicho Concierge Committee)

Editor / Designer: Ayumi Onzo (noadd Inc.)

Illustrator: Ayako Yamada

Translation: Reiki Tsuno (noadd Inc.), Eleanor Edwards

Editorial assistant: Masayuki Fukuda (TOHO AD CO., LTD.), Emi Matsui (Fujita Kanko Inc.),

Nao Wadayama (Sanko Shopping District Promotion Association)

Yu Hirano (Loft Project), Daito Nakajima (suzubar), Reina Kitagawa (Bar colors)

Junichi Nagabori (CENTURION GROUP), Naoya Chiaki (noadd Inc.), Kaori Itakura, Yuta Tarami, Yumi Mizuno, Tsubasa Saito

WEB: Kouichi Teratani, Naoki Matsumoto (Green Fields Inc.)

Printer: Kanayama Printech Co., Ltd.

If you want to place an order or have any questions, please contact

Kabukicho Concierge Committee.

5F Kabukicho Shopping District Promotion

Association Bldg, 1-19-3 Kabukicho,

Published by Kabukicho Concierge Committee

☎ 03-3209-9291

*All the information in this book was updated April 2015

WATCH OUT FOR STREET-HAWKERS

Many foreign tourists have recently come to the police for victim reports. These visitors were approached by street callers in the KABUKICHO area, taken to a bar or drinking location that non-Japanese citizens run, and then served very strong liquor. As a result, before they had realized it, their money or credit cards had gone.

DON'T GET VICTIMIZED. We'd like you to be fully aware of such malicious street callers or drinking places.



SHINJUKU POLICE STATION
Tel 03(3346)0110

There are a lot of scam prices in Kabukicho. Please be careful especially when you enter a place you're not familiar with, or when you go from shop to shop. Never follow puller-ins. It's illegal.

Disturbing the peace goes against the Entertainment and Amusement Trades Control Act.

Published by Kabukicho Concierge Committee

Kabukicho Wi-Fi



The convenient free internet which can be used in Kabukicho.

Enjoy free Wi-Fi for 60 minutes × 4 times a day. Kabukicho Free Wi-Fi is available in stores where this sign is displayed.

[SSID] **Kabukicho_Free_Wi-Fi**

Connecting method

- 1 Configure the SSID setting of your wireless device for a connection to **[kabukicho_Free_Wi-Fi]**.
- 2 Launch the web browser and Tap "Internet"
- 3 Tap "歌舞伎町Wi-Fi"
- 4 Tap "Log in"
- 5 Enter the ID and PASSWORD and tap "Log in" (Registration is required for the first time.)
- 6 Enjoy Kabukicho Free Wi-Fi.



Connect to the <Kabukicho Free Wi-Fi> and install the app [Japan Connected-free Wi-Fi].



We provide the functionality to make smarter network connections in Japan.

Access Point 95,000



Get more information.

<http://www.ntt-bp.net/jcfw/en.html>

powered by **NTT EAST**